

MATCH DAY PROGRAMME

VOL 2 No.2



V



04 OCT 2020

the
pride
PRESENTS

London City Lionesses

VERSUS

Lewes Women Fc

2:00PM KO

@ Princes Park, Dartford

04 OCTOBER 2020

IN THIS PROGRAMME

Greetings From The Chair

Message From Lisa Fallon

20/21 Season Fixtures

Match Day Opposition

Meet Our Pride

Education Partnerships

Photo Gallery

Our Sponsors

SELF MADE

A LIONESSE SLEEPS IN THE HEART
OF EVERY WOMAN.
IT'S UP TO YOU TO WAKE HER UP.



#THEPRIDE



GREETINGS FROM THE CHAIR

Hello everyone,
I would like to extend the customary warm welcome to our visitors from Lewes, who we know will provide stiff opposition in today's match. Like us, their performances so far this season haven't merited a fair amount of points on the board yet – but they are a good side. No team in our league has taken maximum points from the opening three games and we think that underlines just how competitive this league is.

Personally, I always enjoy our games with Lewes. This is not only because of the wonderful chinwag we have afterwards but because there is a lot of mutual respect between the two clubs. I believe we are both forward-looking, pioneering clubs who want to generate a good atmosphere. I enjoy us going toe to toe, with our different styles, on the grass.

Lewes always prove to be formidable opponents, both on and off the pitch!

Lewes always prove to be formidable opponents, both on and off the pitch! Regardless of who we face, our players are continuing to work hard in training under Lisa and Mel's guidance. In the three games we have played to-date, we haven't done enough to win each of them. As ever, with our entire coaching/backroom staff teams' input, we will do more and better and we will continue to improve. We know that our first win is not far away. Originally, we had hoped that today would be the first match where we could welcome supporters back to the stadium again but, sadly, that has proved not to be the case. Our position remains that we are keen for this to happen as quickly as possible – but only when it is safe to do so.



Much other work continues off the pitch on building our fan base and I'm delighted to let you all know that a bespoke kit for Kappa is now available to pre-order online. Kappa have been fantastic to work with through the process and we hope that this will be the first of many collaborations with them.

Despite the obvious recent challenges, there remains a huge amount of interest and goodwill towards the women's game. We are sure we will emerge from this period – but only if we continue to plan for tomorrow, work together – and not be adversarial off the pitch and continue to grow the game together, whether that is by combining leagues or expanding them. Whatever we choose, we should choose together and not pull up the drawbridge behind those who have meteorically risen above the others.

With that in mind, our plans to integrate a pathway from Youth to First Team Football continues with a burgeoning Development Squad and plans for a satellite Under-18 team in North London, which will expand our talent catchment area. Our Shenfield project is growing alongside another new addition to our footballing family, which will be announced soon. Further, we are also actively looking for more clubs to join our Sister Club and Sister Club + programme and would urge those interested to get in touch.

As for today, let's hope for a good game of football and a first win of the season for us!

Diane Culligan



KAPPA Ad

KAPPA FOR WOMEN'S FOOTBALL



MESSAGE FROM LISA FALLON

Hello everyone,

I'd like to start by welcoming our opposition from Lewes today; Simon Parker, his staff and players. We meet again after a short while, having played each other in pre-season so we know that today will be another competitive game against a strong side.

We're already three games into the season and we've had some tough games already and we'd clearly have hoped for more points on the table early on – but it's clear to see that the philosophy and culture within this team is growing and our progress is really encouraging.

We've come out of a tough game away at Durham, where the result wasn't what we wanted but we can take great confidence in the way we approached the game and we all know that we went in with the will to win the game. We were on the front foot for large parts of the game and we really went for it and showed a commitment to perform that we can be really proud of. We were unlucky to come away without the points, but we are building the types of performances that we want and it's just the finer margins that haven't gone our way so far. The results will come very soon if we stick with it and keep that level of commitment that everyone is showing. Today was earmarked as the day we would see fans return to the stands – and whilst we're disappointed, we can't welcome you back today, we know you are all with us in spirit.

I can assure you that your messages of support are valued by the team and help spur us on. We know how much our fans want to be with us whilst also understanding we need to all stay united in the battle against the coronavirus pandemic.

Since our last home game, I was lucky enough to meet a young girl called Vivienne. She was training with a team down at Prince's Park and was having a tough time with being included with the boys in her team. We saw her after training, and I met her and began talking about what was going on and introduced her to some of the team. We have a duty to be role models to young female players and this was another great chance to do that. We have since invited her to be our guest of honour at our first game back, when we can, so we're all looking forward to meeting her again.

Despite only being three games in, a look at the league table shows how closely run this competition will be in. No one has taken maximum points nor have results been easy to call, so it shows that nothing will be won or lost after three games. We have to keep pushing and get points on that board. If we're in the mix come the end of the season, then you get the sense that anything can happen in this league.

Thank you again for your continued support and here's to a great game today.

Lisa Fallon

the pride



SEPTEMBER 2020

5/6 SHEFFIELD UNITED (H)
12/13 CRYSTAL PALACE (A)
26/27 DURHAM (A)

DECEMBER 2020

5/6 COVENTRY UNITED (H)
12/13 LIVERPOOL (H)
19/20 SHEFFIELD UNITED (A)

MARCH 2021

6/7 COVENTRY UNITED (A)
27/28 CHARLTON ATHLETIC (H)

OCTOBER 2020

3/4 LEWES (H)
10/11 LONDON BEES (H)
17/18 BLACKBURN ROVERS (A)
31/1 LEICESTER CITY (H)

JANUARY 2021

9/10 CRYSTAL PALACE (H)
16/17 LONDON BEES (A)
23/24 BLACKBURN ROVERS (H)

APRIL 2021

3/4 LEICESTER CITY (A)
24/25

NOVEMBER 2020

7/8
14/15 CHARLTON ATHLETIC (A)

FEBRUARY 2021

6/7 DURHAM (H)
13/14 LEWES (A)

MAY 2021

1/2 LIVERPOOL (A)



20/21 FIXTURES

Follow the action on **TheFA PLYER**

* Fixtures subject to change

We're Ready!



Thank You For All Of Your Support



MATCH DAY OPPOSITION



1 - TATIANA SAUNDERS
2 - SAMMY QUAYLE
3 - RIHAN CLEVERLY
4 - DANI LANE
5 - NIC COUSINS
6 - ELLIE HACK
7 - EMMA JONES
8 - ELLIE NOBLE
9 - GEORGIA TIMMS
10 - SARAH KEMPSON
11 - SIMRAN JHAMAT
12 - CHARLEY BOSWELL

13 - ELLIE LEEK
14 - PALLA HOWELS
15 - ELLA NEWMAN
16 - EMILY DONOVAN
19 - HANNAH GRIFFIN
20 - SOPHIE O'ROURKE
21 - FILIPPA SAVVA
22 - KATIE ROOD
24 - MEGAN MACKEY
31 - LAURA HARTELY

MANAGER: SIMON PARKER





The Early Years

Lewes Football Club was formed following a meeting at The Royal Oak pub on 23 September 1885. For the first eight years, the players wore light green shirts which were designed to reflect the scenery of the surrounding South Downs, but black and red finally became the club colours in 1893.

The club has played at the Dripping Pan ever since, apart from a couple of seasons prior to the First World War when the club was banished to the adjoining Convent Field. The early years of the club produced only mediocre results and successes were few and far between. In 1920, Lewes became founder members of the Sussex County League.

1960s

Progress was slow and despite four runners-up places, by the 1960s Lewes had only one Sussex RUR Cup win to their name. In 1965, the club's fortunes changed dramatically, winning the County League title for the first time with a massive nine-point lead over runners-up Lancing, as well as both the RUR and Sussex Senior Cups. Lewes became members of the Athenian League and after winning the Division 2 title in 1968, promotion to the Premier Division was gained just two years later when the Division 1 title was snatched from Boreham Wood, with a further Sussex Senior Cup triumph added in 1971. Six years later, the club entered the newly expanded Isthmian League.

1980s

Promotion to Division 1 soon followed although two sixth-place finishes in 1982 and 1989 were the highest positions attained in Division 1. During that time, Lewes reached the final of the Sussex Senior Cup on three occasions, and won the trophy in 1984/85.

1990s

Disaster struck in 1990/91 when Lewes were relegated for the first time in their history. An immediate return as runners-up to Purfleet followed, but that success was short-lived and relegation in successive years meant that by the 1994/95 season the club was down in Division Three.

The slide continued and the first season in the basement division would have been the last in the league if it hadn't been for Cove who conveniently propped-up the league and saved Lewes from automatic demotion.

The club survived rather than thrived until the 1998/99 season when Jimmy Quinn joined as manager, and at the first attempt missed out on promotion by just one place.

Midway through the 1999/2000 season Martin Elliott and a new board of Directors stepped in and immediately the fortunes of the club began to improve, with the capture of the Sussex Senior Cup in 2001 following victory over Bognor Regis.

Naughties (2000s)

There was mixed news on the pitch. The pinnacle of the Men's team's achievement, and what a pinnacle, was to gain promotion to the top of the non-League pyramid in 2007/8. However, the Rooks only lasted one season in the top flight as the Global Credit Crisis hit and funds dried up. The Rooks' new economic reality saw them drop down the divisions.

However, a brand new Women's team was started by Jacquie Fgnew and underwent a dramatic rise from park football to the Women's Combination.





New Dawn (2010s)

Behind the scenes, a group of six supporters calling themselves Rooks125 were working hard to take the club into community ownership having witnessed the serious financial problems that had befallen the club, despite the owners' best efforts.

Finally on July 8th 2010, Lewes FC was officially transferred out of private ownership into a mass-ownership Community Benefit Society called Lewes Community Football Club, consisting of benefactors and members of the former Management Committee. The six members of Rooks125 formed the inaugural Executive Board, working as volunteers to install improved working practices and procedures during the season before planning to open up the wider ownership of LCFC to all the club's supporters in 2011/12. The first chairman of the Community Club was appointed in 2013 with club legend Terry Parris taking up the position. Terry was succeeded by Stuart Fuller in 2015. All Board positions now are elected by the whole Ownership base.

On the pitch, restricted resources saw the men's team drop two Leagues, down to the Ryman League South (now called the Bostik League).

The Women's team enjoyed a meteoric climb up to the FA Women's Premier League (South), gaining promotion from the Combination League by winning every match but one, which they drew.

So where are we now?

In July 2015, the club opened a state-of-the-art 3G all-weather facility adjacent to The Dripping Pan, for the whole community to use as well as all Lewes FC teams to train on. Planning permission has also been gained to build a new Community Clubhouse inside the Pan and the estimated £1.5m required is all that we need!

In 2017, we launched the ground-breaking EqualityFC campaign that saw Lewes FC become the first (and currently only) club side in the world to have equal playing budgets for women and men. A rapid rise in attendances at women's games also helped Lewes FC Women to gain admission into the second tier of the League structure and play in the FA Women's Championship, alongside clubs such as Spurs, Manchester United, Aston Villa and others.

In December 2018 Fran Alonso was appointed first team manager for Lewes Women and saw them finish their first ever season at step 2 in 9th place, whilst the Men's team finished their first season back in the Isthmian Premier League in 11th place. At the beginning of 2020, Fran was offered the Manager's job at Celtic women's team as they turned fully professional and his hugely experienced assistant Simon Parker became First Team Manager.

In October 2019, first team manager Darren Freeman stepped down to concentrate on his work with a sports management company. Assistant Managers Ross Standen and Tony Coade took the reins for a while until the appointment in February 2020 of the current First Team Manager Hugo Langton.

The club continues to create a solid foundation on which to build for the future. It has around 1,500 Owners and has gained a great reputation for all its community work, stand-out marketing and strong backing for equality in sport.

The future is bright, the future is black & red...



MEET THE PRIDE

GK/ DEFENDERS



NO.1 - LUCY THOMAS

NO.2 - CHANTELE MACKIE

NO.3 - LEANNE COWAN

NO.5 - HANNAH SHORT

NO.6 - YLENIA PRIEST

NO.12 - GRACE NEVILLE

NO.13 - HOPE SMITH

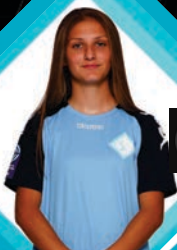
NO.18 - ELLIE MASON

NO.30 - JESSICA SHRE
YANEZ COLLEY

MEET THE PRIDE

MIDFIELDERS

11



7



Agility

8



14



4



16



17



15



23



NO.4 - POPPY WILSON

NO.7 - ALLI MURPHY

NO.8 - FREDA NYISI

NO.11 - ANNIE ROSSITER

NO.14 - KALLIE BALFOUR

NO.15 - HAYLEY NOLAN

NO.16 - HARLEY BENNETT

NO.17 - LUCY FITZGERALD

NO.23 - LILY PURSEY

MEET THE PRIDE

ATTACKERS

37



Bethany Ellen

21



20



10



9



NO.9 - JULIETTE KEMPMI

NO.10 - LILY RIGG

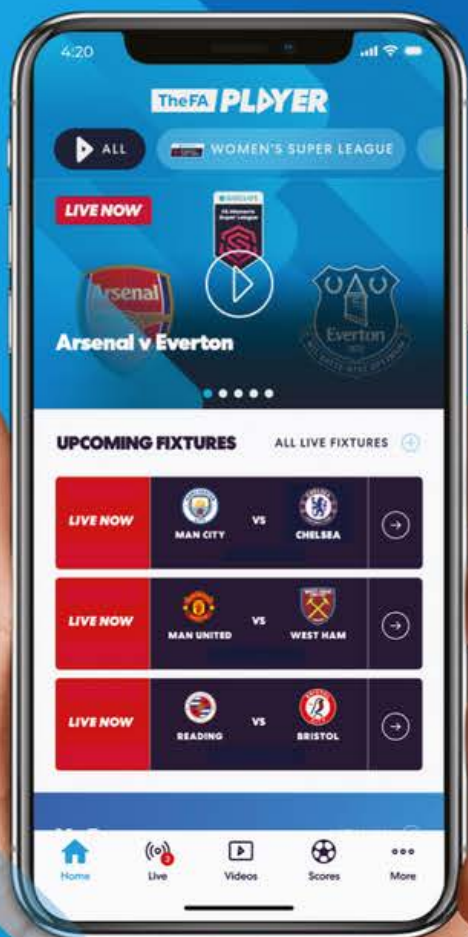
NO.20 - ATLANTA PRIMUS

NO.21 - FLORENCE FYFE

NO.37 - ELIZABETHA EJUPI

MANAGER: LISA FALLON

ASSISTANT MANAGER: MELISSA PHILLIPS



**EVERY GOAL
EVERY CELEBRATION
EVERY MOMENT
EVERY TEAM**

FREE

FOLLOW THE ACTION LIVE ON

TheFA PLAYER

faplayer.thefa.com





Further Education Partnership

EDUCATION PARTNERSHIPS

[To Find out more visit
www.londoncitylionesses.com](http://www.londoncitylionesses.com)



Middlesex
University
London

Higher Education Partnership

iPRO

HYDRATE

THE OFFICIAL DRINK PARTNER OF
LONDON CITY LIONESSES



**NATURAL
INGREDIENTS**



**CAFFEINE
FREE**



**NO ADDED
SUGAR**



**FULLY
RECYCLABLE**



**VEGETARIAN
& VEGAN**



SCAN THE CODE
To discover where to buy
iprohydrate.com/where-to-buy

Follow iPRO on Social:



@iPROHYDRATE

Photo Gallery



London City Lionesses Would Like To Say Thank You To Our Sponsors

**Proud
Sponsors**



SETL



**Official
Kit Partner**

**Official
Hydration Drink
Partner**



**Official
Supplier**

For more information on how you can become a sponsor or partner, please contact us on marketing@londoncitylionesses.com or call us on 020 7123 4567.

[Click to find out more about our partners](#)

WE ARE



THE PRIDE

Follow Us



[@londoncitylionesses](https://www.instagram.com/londoncitylionesses)



[@LC_Lionesses](https://twitter.com/LC_Lionesses)



[@londoncitylionesses](https://www.tiktok.com/@londoncitylionesses)



[London City
Lionesses](https://www.facebook.com/LondonCityLionesses)